

ECP500 Printer Firmware download

Before change the firmware:

Install the Firmware downloader by click the Setup

Print a test page and check the Baud Rate of the printer setting if it is a serial printer.

Reset the printer by turn off and on the printer power switch.

After install the Firmware downloader

Start > Program > POSBANK > ECP500firmwaredownloader. In the window below, select the Port for what the printer belongs to. i.e. Serial or Parallel printer.

If the printer is a serial printer:

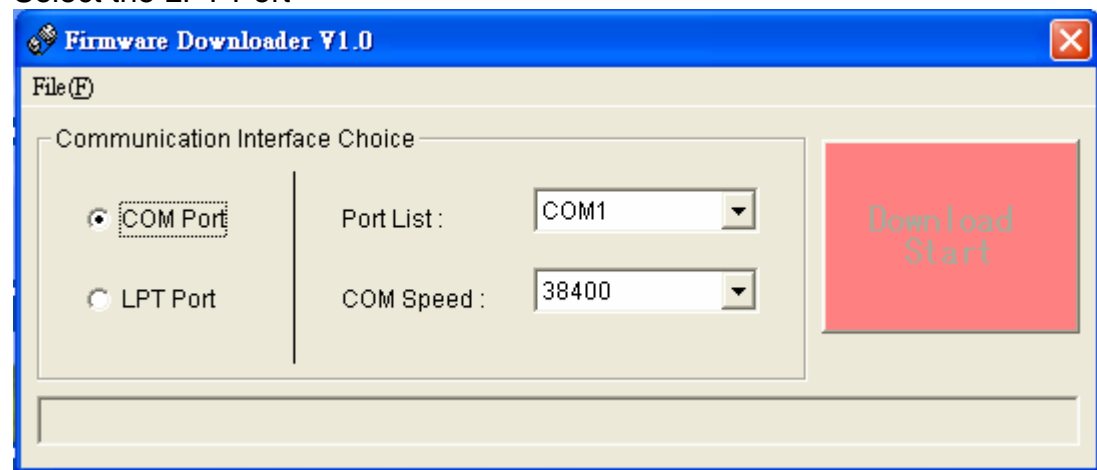
Select the Port connection from the Port List.

Select the COM Speed to match the printer speed.

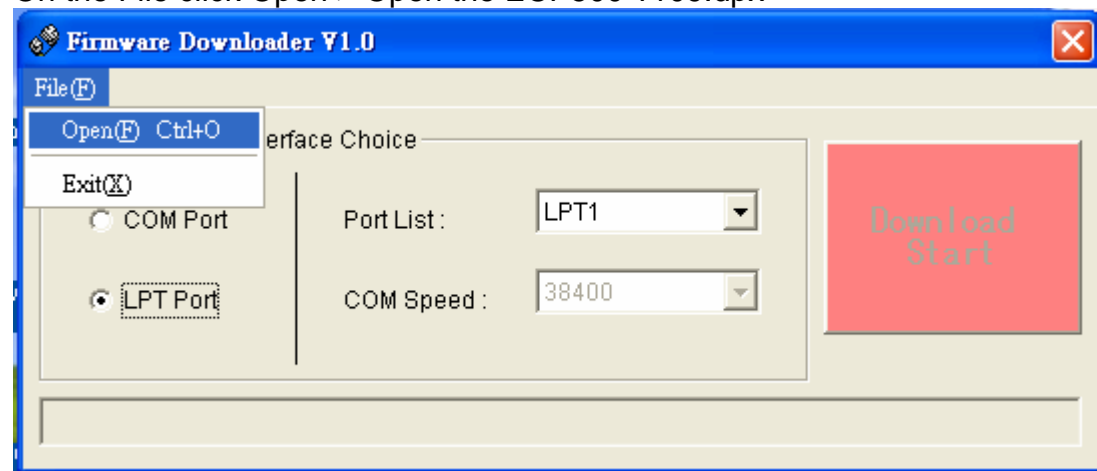
Note: The printer speed can be find on test page, the Baud Rate

If the printer is a Parallel printer

Select the LPT Port



On the File click Open > Open the ECP500-v109.dpx



Click Download Start to begin download to the printer.

Same process on both Serial and Parallel Printers

